

PROVIDENCE PAVILION

OFFICE + MEDICAL OFFICE FOR LEASE

5002 CROSSINGS CIRCLE | MT. JULIET, TN 37122



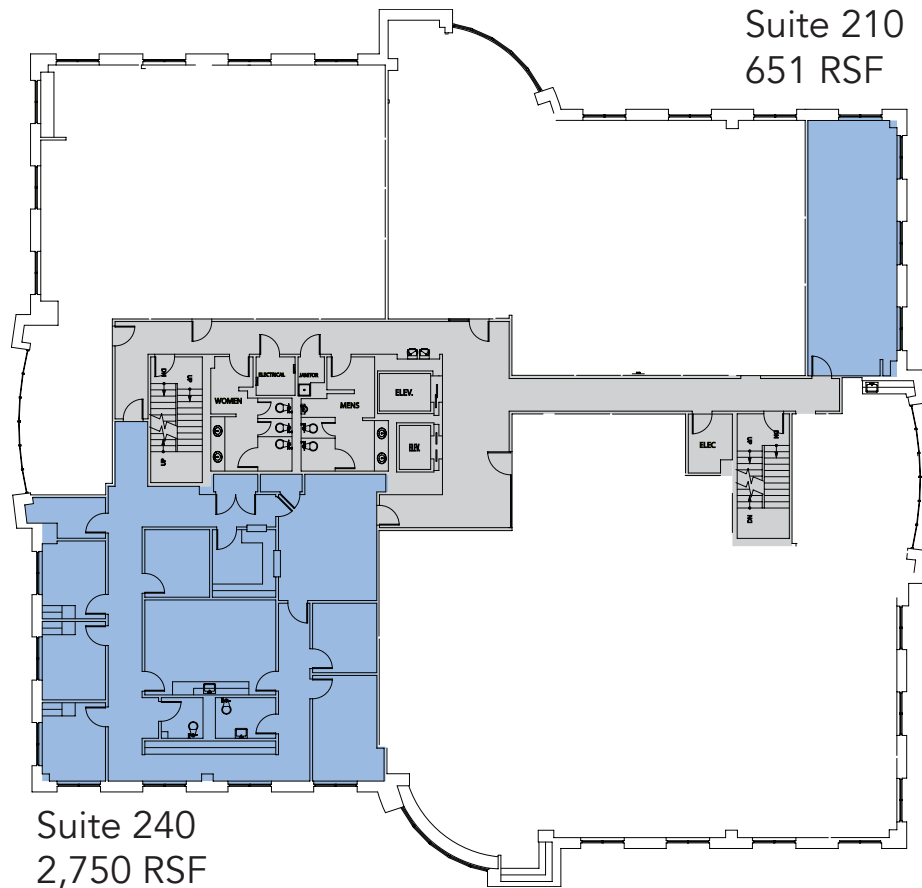


Providence Pavilion Neighborhood Map

- | | | | |
|--|------------|-------------------------------------|---------------|
| 1. Creekside at Providence..... | Apartments | 7. Regal Cinemas Providence 14..... | Movie Theatre |
| 2. Hampton Inn & Suites Mt. Juliet | Hotel | 8. LC Mount Juliet..... | Apartments |
| 3. Cracker Barrel Old Country Store..... | Restaurant | 9. Target..... | Retail |
| 4. Chick-Fil-A | Fast Food | 10. Best Buy | Retail |
| 5. Jonathan's Grill..... | Sports Bar | 11. Meridian at Providence | Apartments |
| 6. Kroger | Grocery | 12. Neighborhoods..... | Private Homes |

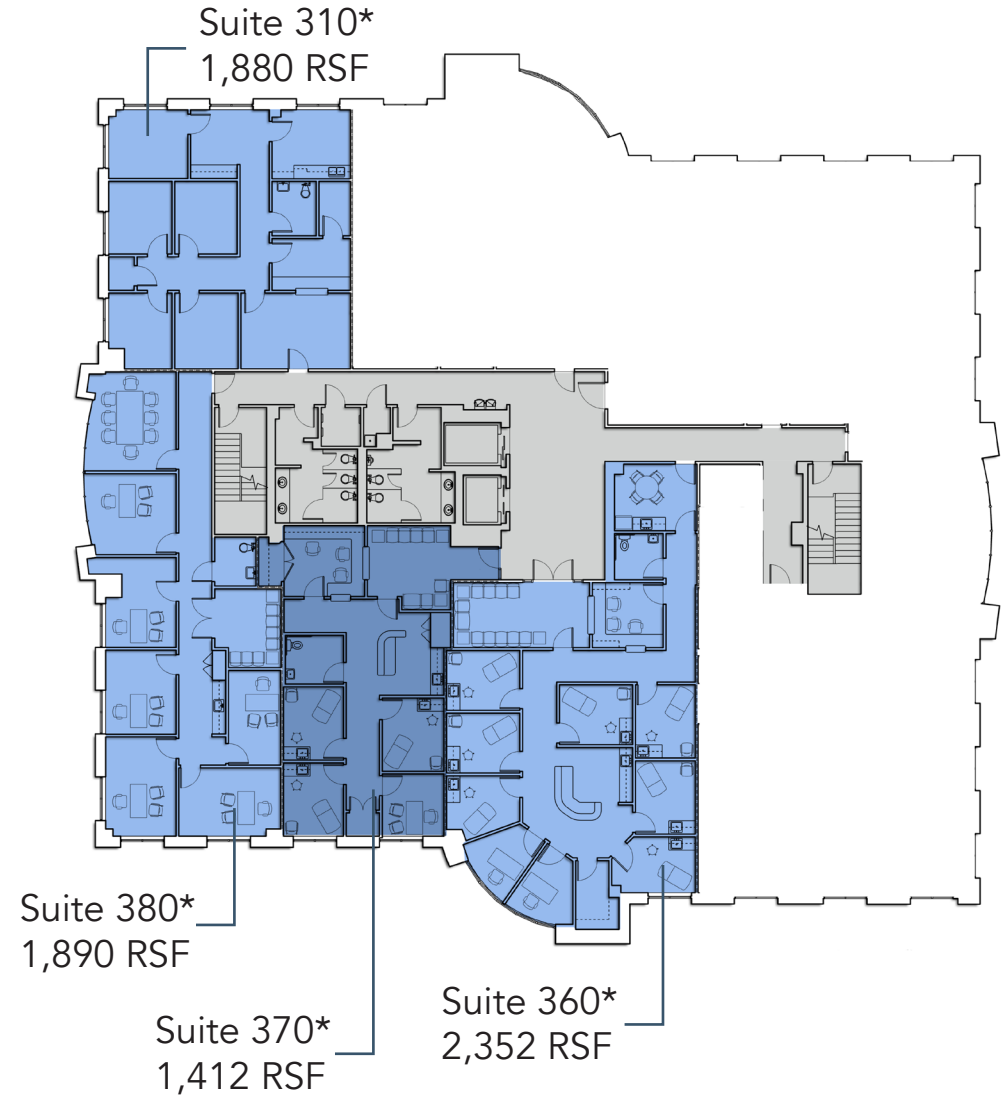
Available Suites

SECOND FLOOR



 Available Suites

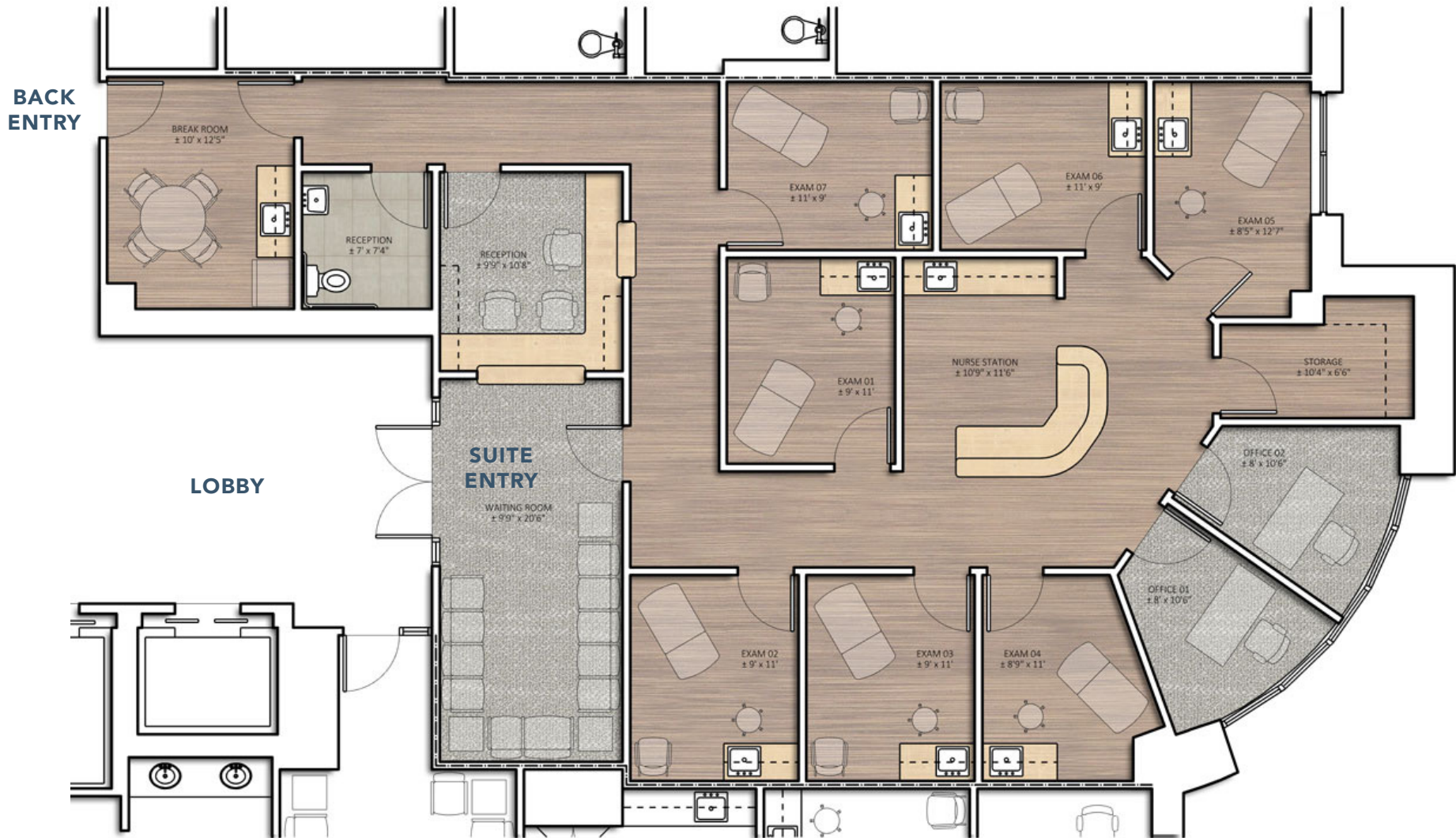
THIRD FLOOR



**These suites show conceptual plans.
Suites can be adjusted to fit tenant needs.*

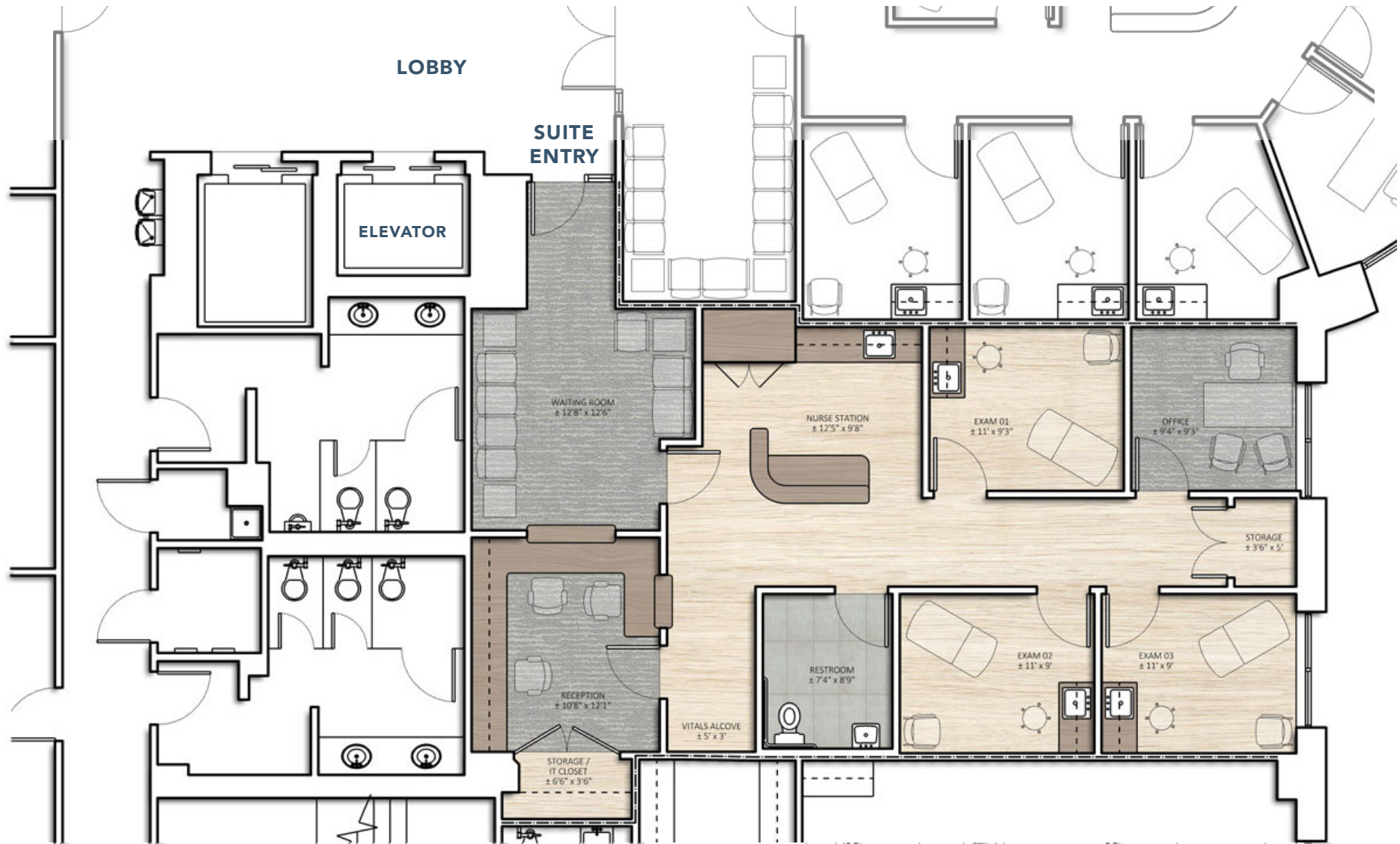
Third Floor

SUITE 360 - 2,352 RSF



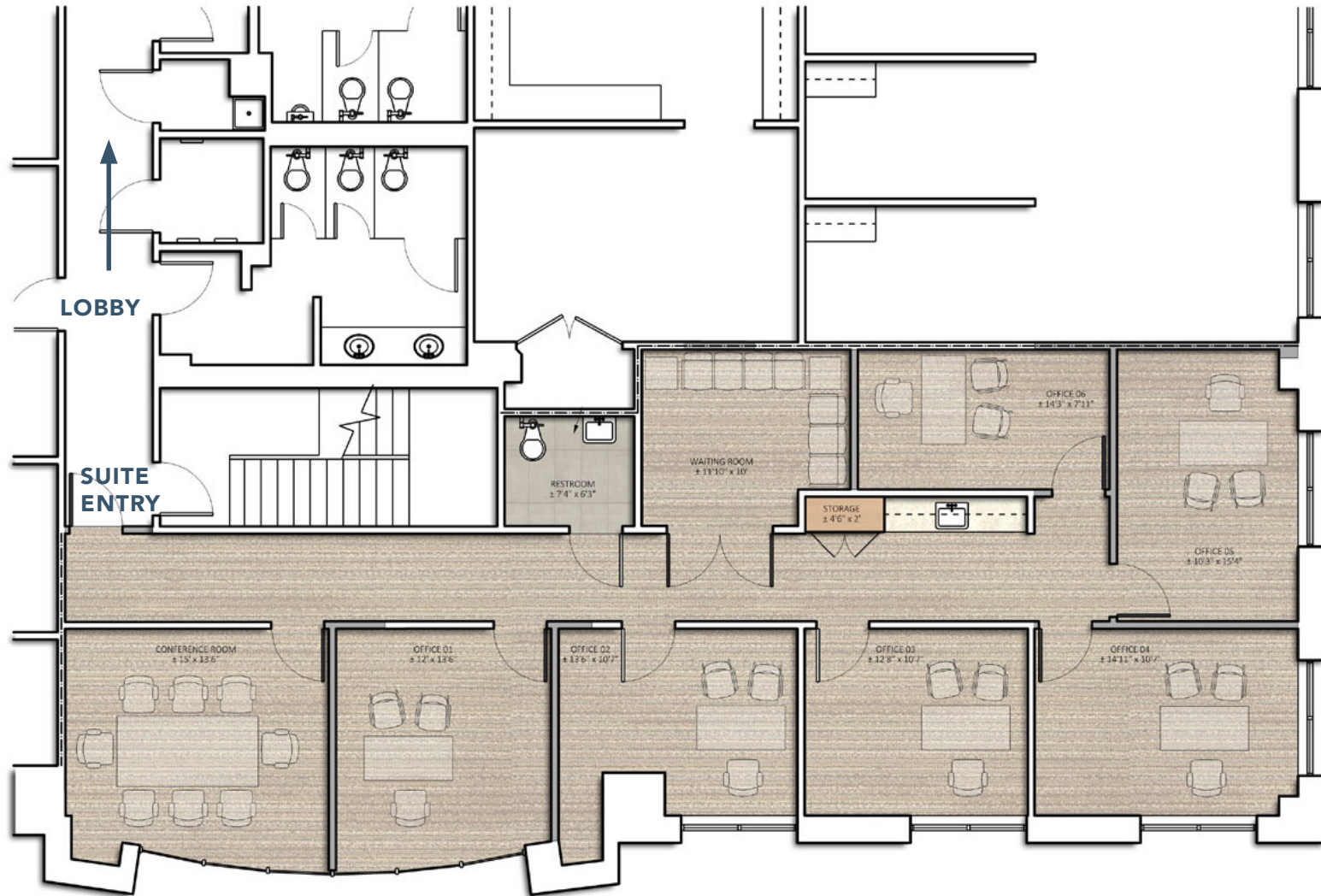
Third Floor

SUITE 370 - 1,412 RSF



Third Floor

SUITE 380 - 1,890 RSF



Conceptual Office Renderings

Spaces may be subdivided.

SUITE 210

651 RSF

Take Virtual Walk-Through



Conceptual Office Renderings

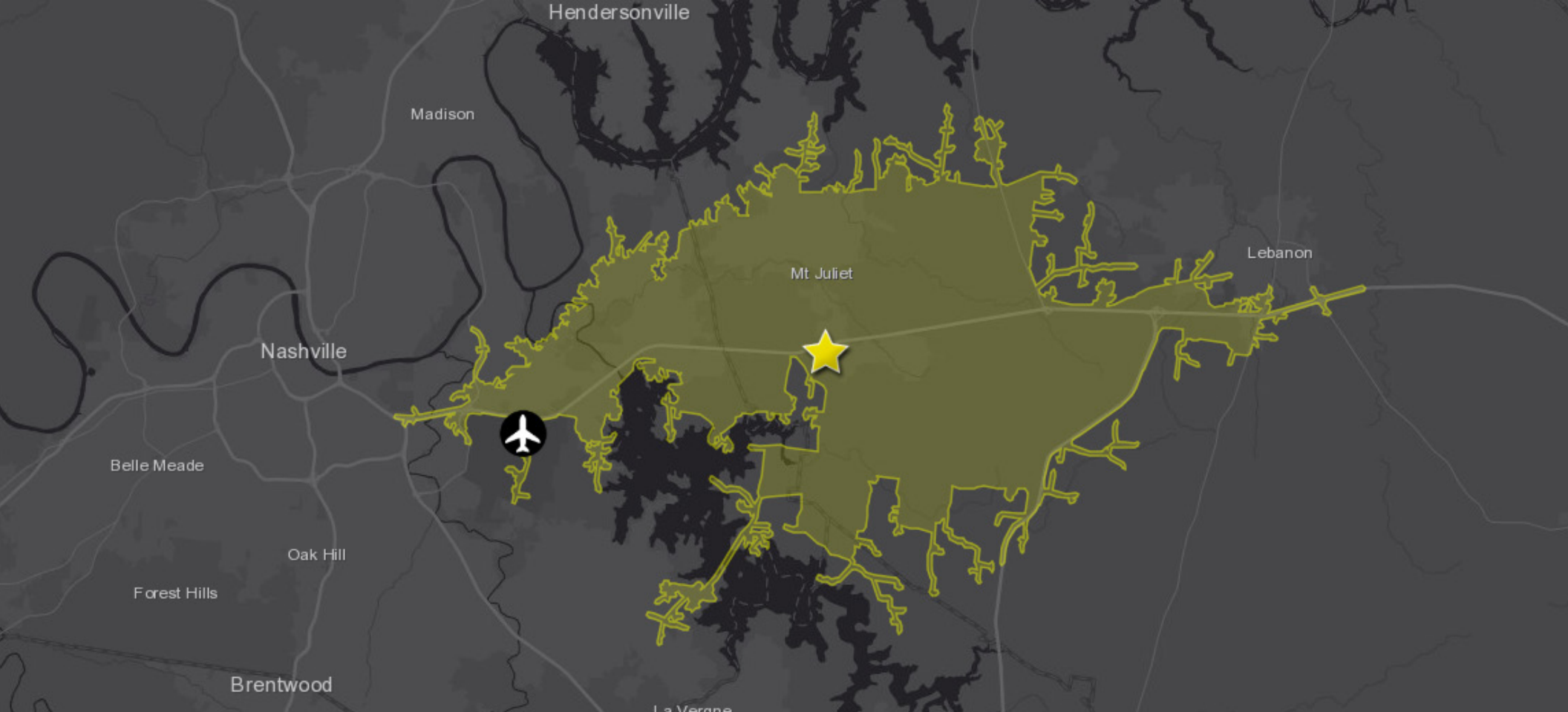
Spaces may be subdivided.

SUITE 300

5,755 RSF

Take Virtual Walk-Through





Demographic Profile

KEY METRICS

- 2018 population: 106,246
- 2023 projected population: 119,499
- Average Household Income: \$79,334



15-minute drive-time radius from site